



eMed Snapshot: Transforming Personal Medicine and Health Tracking

**INNOVATIVE PLATFORM
EMPOWERING EFFECTIVE
PERSONAL MEDICINE AND
HEALTH HISTORY TRACKING**


What is eMed Snapshot

In a medical context, "snapshot" generally refers to a quick, concise overview or summary of a patient's health status or a specific aspect of their care. It's a way to get a rapid understanding of key information without needing to delve into detailed records.

Here's a breakdown of how "snapshot" is used:

Patient Snapshot:

. This refers to a brief summary of a patient's medical history, current conditions, medications, and other relevant information. It's designed to give healthcare providers a quick orientation before a consultation or to provide a quick overview of a patient's status.



Meeting Program

- Overview of eMed Snapshot Platform
- Personal Medicine Management
- Comprehensive Health Tracking
- User Experience and Benefits
- Future Developments and Innovations



Purpose and Vision of eMed Snapshot

Integrated Medication Management

EMed Snapshot offers a streamlined platform that consolidates medication schedules and health information in one place.

User-Friendly Design

The platform is designed for ease of use to encourage regular health monitoring and medication adherence.

Personalized Healthcare

EMed Snapshot promotes proactive and tailored healthcare management based on individual needs and data.

Core Features and Functionalities



Medication Tracking

The platform enables users to keep an accurate record of their medications for better health management.

Health Reminders

Users receive timely reminders for medication and health checkups to ensure adherence to health routines.

Health Metric Recording

The platform records key health metrics to monitor the user's well-being over time effectively.

Secure Data Sharing

Data storage and secure sharing allow safe communication between users and healthcare providers.

Personal Medicine Management

Medication Tracking and Reminders



Medication Tracking

EMed Snapshot provides comprehensive features to track medication schedules accurately and efficiently.



Customizable Reminders

Users receive timely and flexible reminders to take medication, promoting better adherence to prescribed treatments.



Improved Treatment Adherence

The combined tracking and reminders help users avoid missed doses and improve overall treatment effectiveness.

Integration with Healthcare Providers

Seamless Communication

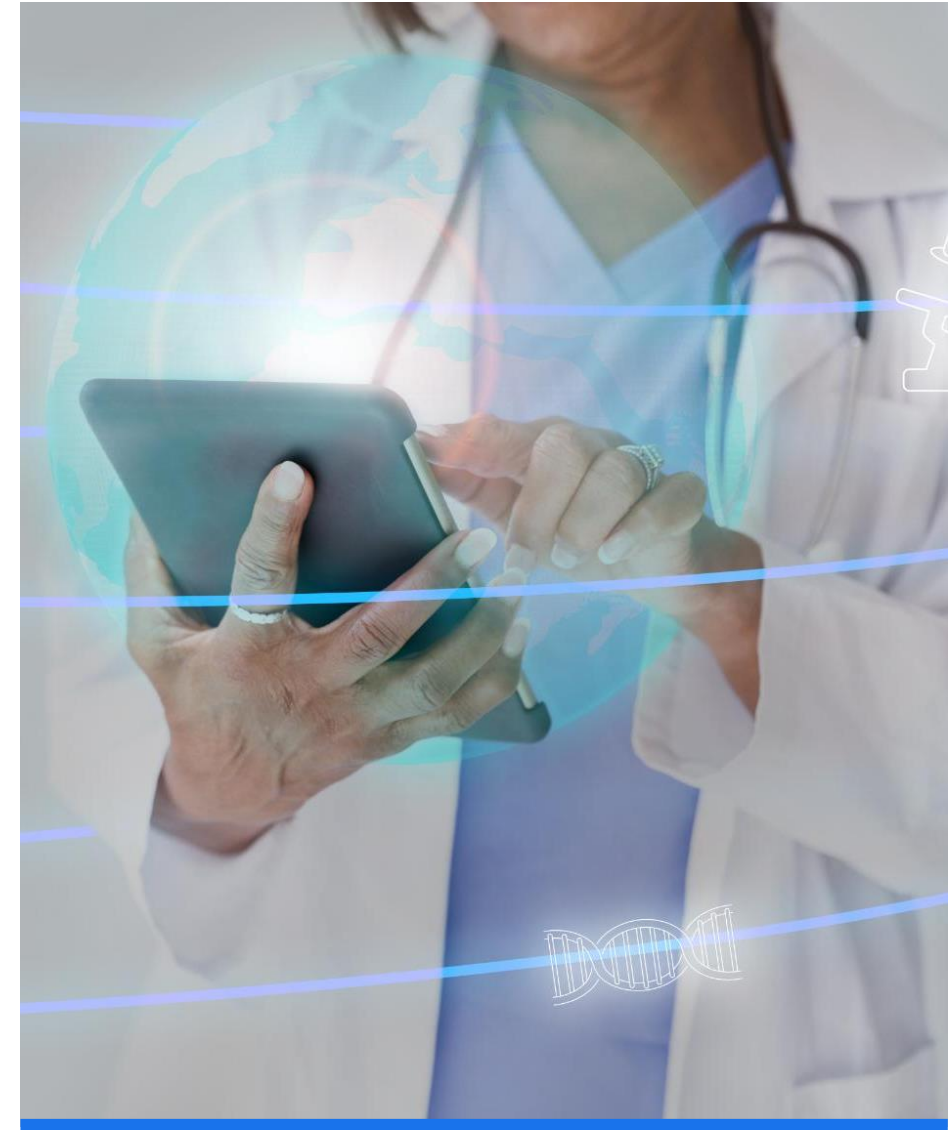
The platform ensures smooth and continuous communication between patients and healthcare providers for better care.

Data Sharing

Secure data sharing supports coordinated care and quick response by healthcare professionals.

Coordinated Care

Integration enables healthcare providers to coordinate effectively and adjust treatment plans promptly.





Personalized Dosage and Schedule Management

Personalized Dosage Instructions

The platform offers tailored dosage instructions to fit individual health requirements, ensuring precise medication intake.

Schedule Management

Users can create and manage complex medication schedules to ensure timely and consistent treatment adherence.

Comprehensive Health Record Tracking

Recording Daily Health Metrics



Blood Pressure Monitoring

Logging daily blood pressure helps track cardiovascular health and detect early signs of hypertension.



Glucose Level Tracking

Daily glucose monitoring provides insights into blood sugar control, important for diabetes management.



Physical Activity Logging

Recording physical activity helps evaluate fitness progress and overall wellness.

Storing and Accessing Medical History

Secure Medical Data Storage

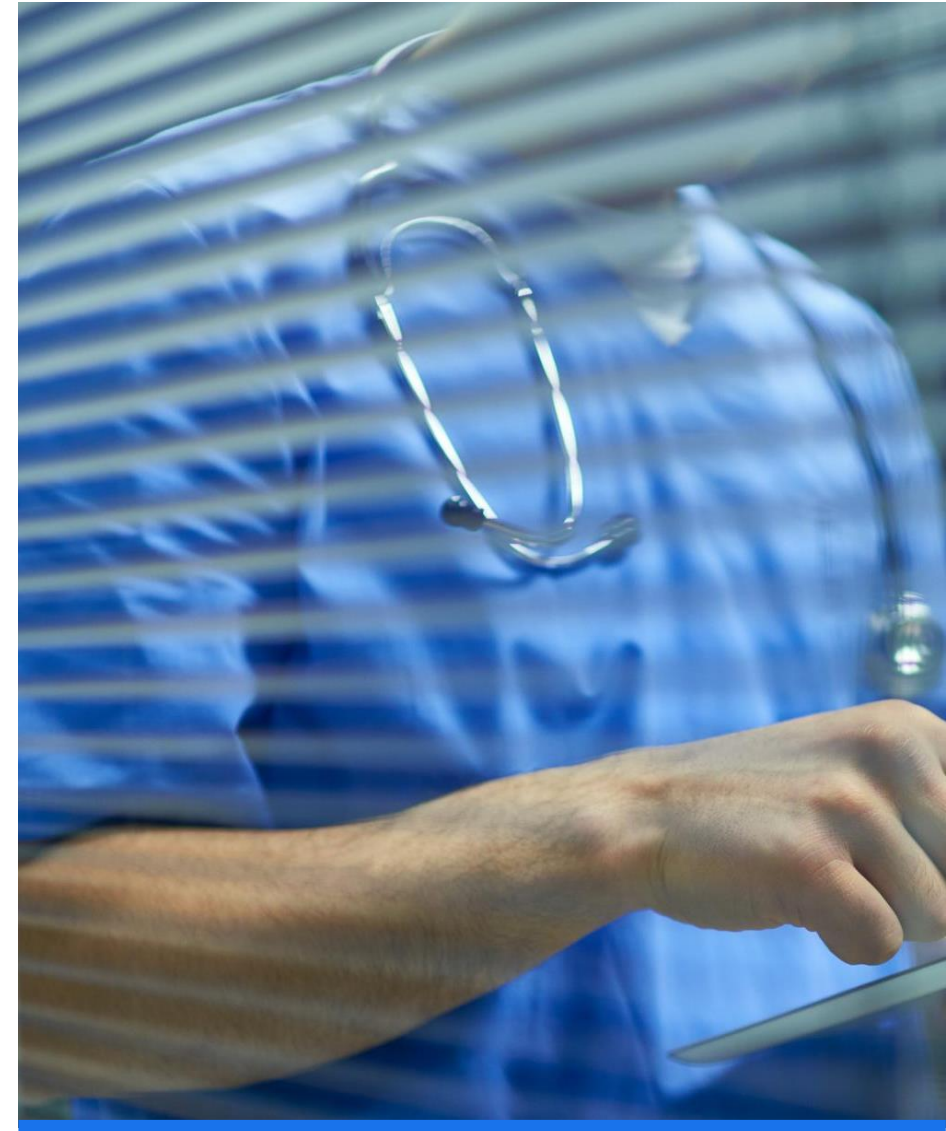
The platform ensures secure storage of all medical data including diagnoses and treatments.

Comprehensive Health Information

Users can access full medical histories, such as test results and treatment details.

Accessible Anytime, Anywhere

Authorized healthcare professionals and users can retrieve medical data anytime for effective care.



Data Security and Privacy Considerations



Advanced Security Protocols

EMed Snapshot uses advanced protocols to safeguard sensitive health data from unauthorized access.



User Privacy Assurance

The system ensures strict privacy of user information, maintaining confidentiality at all times.



Regulatory Compliance

EMed Snapshot adheres to health data regulations to maintain legal compliance and trust.

User Experience and Benefits





Ease of Use and Accessibility

User-Centric Design

The platform is designed focusing on user needs to ensure ease of use and efficiency.

Accessibility Features

Accessibility options support users of varying abilities, enhancing inclusivity for all ages.



Empowering Patients in Self-Care

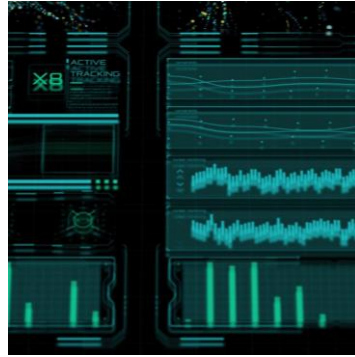
Health Tracking Tools

EMed Snapshot provides digital tools to help patients monitor their Personal Medicine and Health history Tracking effectively and consistently.

Patient Empowerment

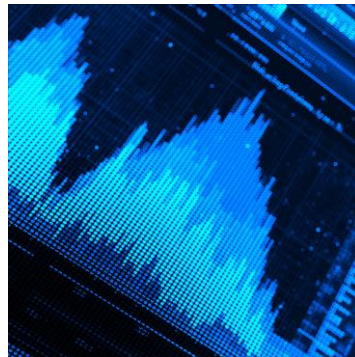
These tools enable patients to take control and participate actively in managing their healthcare journey.

Insights and Analytics for Better Health Outcomes



Personalized Health Analytics

The platform provides tailored health data to users, enabling individual-focused insights for improved wellbeing.



Trend Identification

Users can track trends in their health through smart analytics to make informed lifestyle decisions.



Informed Decision Making

Analytics empower users to make better choices for their health based on clear and actionable insights.

Future Developments and Innovations



Upcoming Features and Technological Advancements

AI-Driven Recommendations

Future features will include AI-driven recommendations to improve healthcare decision-making and outcomes.

Expanded Interoperability

Enhanced interoperability will enable seamless sharing of patient data across diverse healthcare systems.

User Customization

Improved user customization options will allow personalized healthcare experiences and settings.





Integration with Wearable Devices

Seamless Health Data Capture

Integration allows automatic and continuous health data collection from wearable devices for enhanced monitoring.

User Convenience and Accuracy

Automated data capture improves user convenience and ensures higher accuracy of health information.

Potential Impact on Personalized Healthcare

Advanced Data Management

EMed Snapshot utilizes advanced data management for accurate and efficient healthcare delivery.

Personalized Healthcare Insights

Combining data with personalized insights enhances individualized patient care and treatment plans.

Transforming Healthcare Experience

EMed Snapshot has potential to revolutionize the delivery and experience of healthcare services.



Conclusion

Advancement in Personal Medicine

EMed Snapshot provides innovative tools that significantly improve personal health management and monitoring.

Empowerment of Users

The platform empowers users with comprehensive health tracking to make informed decisions about their well-being.

Enhanced Healthcare Collaboration

EMed Snapshot facilitates collaboration between patients and healthcare providers to improve healthcare outcomes.